



Videojet Focus™ Series
Laser Coding Systems

We Build Confidence... *In High-Resolution Laser Coding*

- *High-speed, permanent laser coding*
- *Small footprint, easy on-line integration*
- *Clean, high-resolution coding*
- *Reliable, easy-to-use system*



Get confident. Contact us today.

Versatile Steered-Beam Laser Coding

The Videojet Focus™ Series Laser Coding Systems

The Videojet Focus S10 and S25 series laser coding systems deliver affordable, steered-beam laser coding to a wide variety of applications. These laser coders offer permanent, superior quality codes at high production speeds. The Videojet Focus series laser coders feature small footprints, high speed printing, and rugged reliability in a wide variety of production environments.



The Videojet Focus S25 laser coding system features high speed, high resolution printing



The Videojet Focus S10 laser coding system features the industry's smallest footprint

High Resolution, Permanent Codes

The Videojet Focus™ S25 system provides high speed, steered-beam marking, making it well-suited for high throughput applications. With the Hi-Resolution head option, both the S10 and S25 models can mark characters at code heights as small as .01 inches (0.025 cm). The Focus laser coding systems produce consistently clean, high quality, permanent codes onto products such as paperboard packaging, claycoat or secondary packaging, labels, PET, PVC, and other plastics.

Easy to Install and Operate

The Videojet Focus S10 system is a small, compact laser coder, with a footprint of only 24 x 7 x 8 in. (61 x 17.8 x 20.3 cm), and neither model requires a PC or additional control module. The Focus systems are also easy to install and maintain, providing outstanding, efficient and reliable coding to maximize uptime for your production line. The Focus systems deliver one to three lines of print, and allow for features such as character height and width, energy, and placement/delay to be adjusted at full production speeds, reducing changeover time and increasing throughput.



Reliable, Continuous Coding

Videojet Focus systems provide the best operating temperature range in the industry, allowing for flawless performance, even in the most demanding environments. The laser tube in both models is also supported by a 3-year warranty. The Focus series laser coders require very little maintenance and are extremely reliable, reducing downtime and increasing output.

Videojet TotalSource® Services

The **TotalSource** program is the finest and most complete technical support system in the business. These services include everything from expert applications assistance, operator training and a full spectrum of maintenance services. The **TotalSource** program ensures total customer satisfaction. **Support when you need it.**



Clean, Clear Codes — Every Time

The Videojet Focus laser coding systems can print alphanumerics, bar codes, logos and a variety of other characters. The Focus series laser coders are ideal for marking on paper, cartons, plastics and glass in the tobacco, food, beverage, pharmaceutical and personal care markets. These systems utilize CO₂ laser technology, providing clean operation, and eliminating the need for consumable fluids and routine maintenance and parts associated with other forms of printing equipment.

Videojet e-Commerce

Today, US customers enjoy the speed and convenience of the Videojet e-commerce system. You can order Videojet parts and accessories at the speed of demand, 24/7. You can also check your purchasing history and shipping information instantly. With the click of a mouse, the boundaries of procurement have been removed.

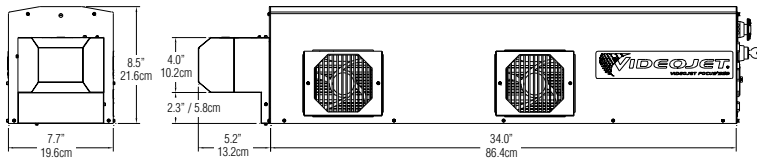


Click. Buy. Done.™

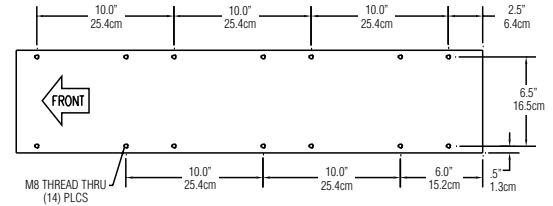
Order online ,click here



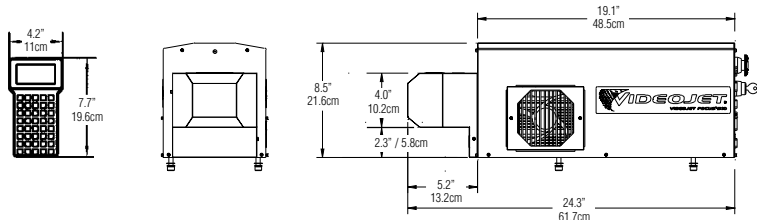
Videojet Focus™ Series Laser Coding Systems



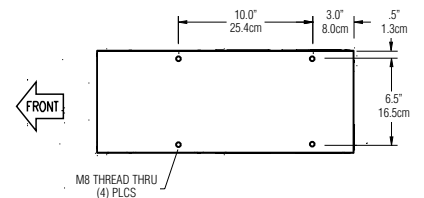
Videojet Focus S25 Standard Head Configuration



Videojet Focus S25 Mounting Hole Pattern Placements



Videojet Focus S10 Standard Head Configuration



Videojet Focus S10 Mounting Hole Pattern Placements



Specifications

Font Sizes

Scalable from 0.01" to 5.0" (0.025 cm to 12.7 cm), based on lens option

Language Capabilities

Danish, Dutch, English, French, German, Italian, Japanese, Spanish, UK English

Laser Tube

Single sealed CO2 laser, 10W or 25W

Warranty

3-year warranty on laser tube

Lines of Print

Up to three lines of code

Energy Delivery

Steered beam technology

Remote Communication

Two RS-232 ports. Port1 for downloading new software, Port2 for running the user interface on hand-held terminal or optional PC interface

Accessories

Laserhead Stand/Mounting Bracket, Beam Shield Kit, Shaft Encoder, Product Detector, Dust/fume Extractor, AC Line Conditioner, Visible Diode, PC interface

User Interface

Hand-held terminal with a 40-key, alpha-numeric keypad. Optional PC interface and Global font interface also available. 4x20 character dot matrix display

Message Storage

20 message storage capability each 100 characters

Ambient Operating Temperature Range

Temp.	Print Duty Cycle
120°F (49°C)	20%
115°F (46°C)	40%
110°F (43°C)	60%
100°F (39°C)	80%
95°F (35°C)	100%

Cooling System

Air cooled

Humidity Range

5%-90% RH Non-Condensing

Construction

Stainless steel

Electrical Requirements

50/60 Hz operation
110/220 volt operation

Software

Resident in flash memory; field upgradeable by downloading to CPU

Dimensions

Videojet Focus S10: 24.3 x 7.7 x 8.5 inches (61.7 x 19.6 x 21.6 cm)

Videojet Focus S25: 39.3 x 7.7 x 8.5 inches (100 x 19.6 x 21.6 cm)

Unit Weight

Videojet Focus S10: 35 lbs. (16 kg)

Videojet Focus S25: 65 lbs. (30 kg).

Life Testing

13g shock tested
Thermal shock tested



© 2002 Videojet Technologies Inc. – All rights reserved. Videojet Technologies Inc.'s policy is one of continued improvement. We reserve the right to alter design and/or specifications without notice. Videojet and TotalSource are registered trademarks and Videojet Focus and Click. Buy. Done. are trademarks of Videojet Technologies Inc.

This information is provided by

JETEC Corporation

2817 McGaw, Irvine, CA 92614

Tel: 714-979-9611 / 949-477-6161, Fax: 714-755-5950

Contact: sales@jetec.com, www.jetec.com

[Shop Online, Click Here](#)

Part No. SL000374
Focus Series-0802-US
Printed in U.S.A.